



ARISTON



# AURES SLIM

ELECTRIC INSTANTANEOUS SINGLE POINT WATER HEATERS



**Compact, efficient, very quick** and **elegant**, the new Aures electric instantaneous water heaters are the ideal solution for having **hot water immediately ready** right after you open the tap.



**SINGLE POINT**

Hot water to a single point



**TOTAL SAFETY**

Double Safety Thermostat



**IP25 WATERPROOFING**

Installation in the shower cubicle



**EASY INSTALLATION**

Easy to install and maintain



**ENERGY EFFICIENT**

Limited water and heat loss



**ITALIAN DESIGN**

Designed by Umberto Palermo

010 745 9910

info.za@aristonthermo.com

www.ariston.com



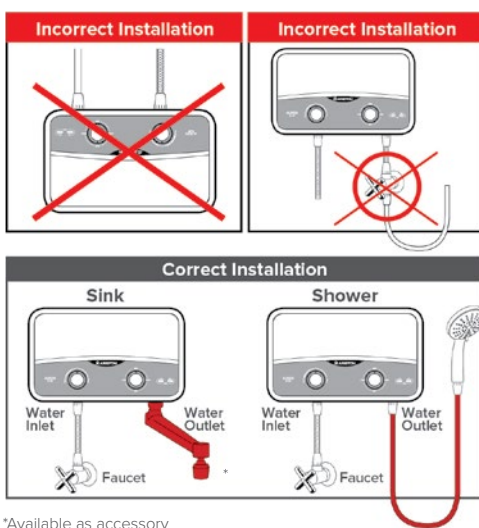
## AURES SLIM FEATURES AND BENEFITS

### COMFORT REGULATION:

- / SLIM FLOW 7kW: Take full control of your comfort with a Flow regulating dial and Power dial
- / SLIM 3,5kW: Set your desired power with an easy to use power dial

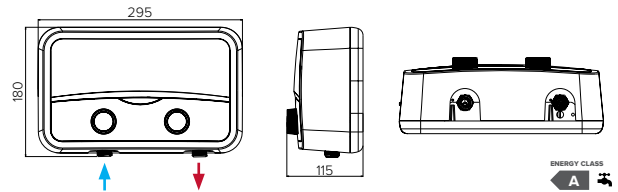
### INSTALLATION (WALL MOUNTED ONLY)

**SINGLE POINT** supplies only one water point directly connected to the appliance (unpressurised).



\*Available as accessory

## TECHNICAL INFORMATION



	AURES SLIM	AURES SLIM FLOW
Model Name	Aures S 3.5 SH UAE	Aures SF 7 SH EU
Product Code	3520219	3520019
ErP Class	A	
Power (KW)	3,5	7
Type	Single Point Installation - Oversink	
Voltage (V)	220 - 240	
Phase	Single Phase	
Ampere (A)	15,9	31,8
Recommended fuse rating (Amps)	20	40
Recommended Cable Size	2,5mm <sup>2</sup>	6mm <sup>2</sup>
Frequency (Hz)	50/60	
Heating Element	Copper	
Working Pressure (Min - Max)	20kPa ~ 800kPa	
Max Working Temp (°C)	55	
IPX Rating	IP25	

## UNDERSTANDING PERFORMANCE

The temperature and flow rate of the water entering the product determines how well it performs.

Flow rate - For higher performance (temperature), reduce the flow rate (use the below chart for guidance).

PERFORMANCE		
MODEL	ΔT (°C)	FLOW RATE (L/MIN)
AURES S 3.5 SH UAE Single Point	20	2,5
	25	2,0
	30	1,7
AURES SF 7 SH EU Single Point	20	5,0
	25	4,0
	30	3,3

**Ambient water temperature** – The product can only heat the water by a certain amount of degrees (ΔT). In winter when the incoming water temperature is colder, the output water temperature will be less. Please reduce the flow rate to compensate.



The warranty period is valid from your purchase date (please retain proof of purchase) and on condition that the unit was installed by a qualified electrician in accordance with the instructions enclosed in the unit.



For further information visit our website [ariston.com](http://ariston.com)  
Ariston Service 010 745 9911

