

## Technical Data Sheet

Series: **Kera**

Article code: **88CR7554**

### Description:

2-way built-in shower mixer with diverter, Ø200 mm ultra-thin shower head in stainless steel, intake of water and holder, shower arm.

### Materials:

Brass

### Surface finish Chrome:

14 micron Nickel

0.3 microm Chrome

### Finishings



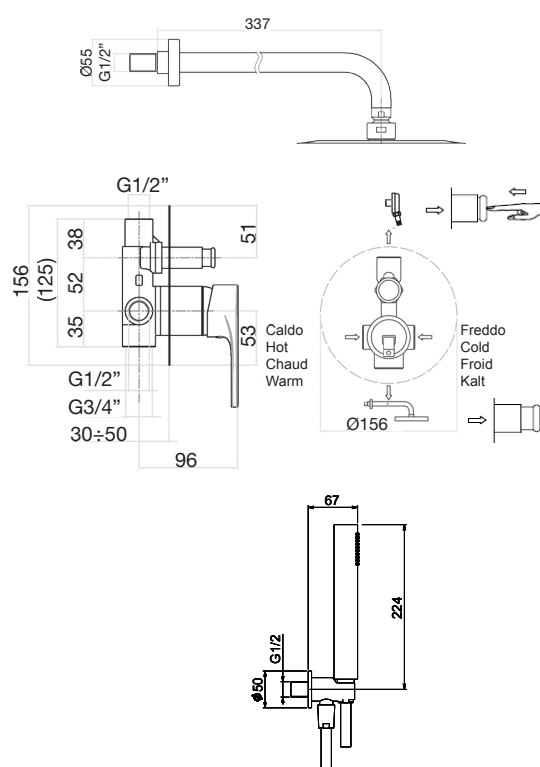
## Features



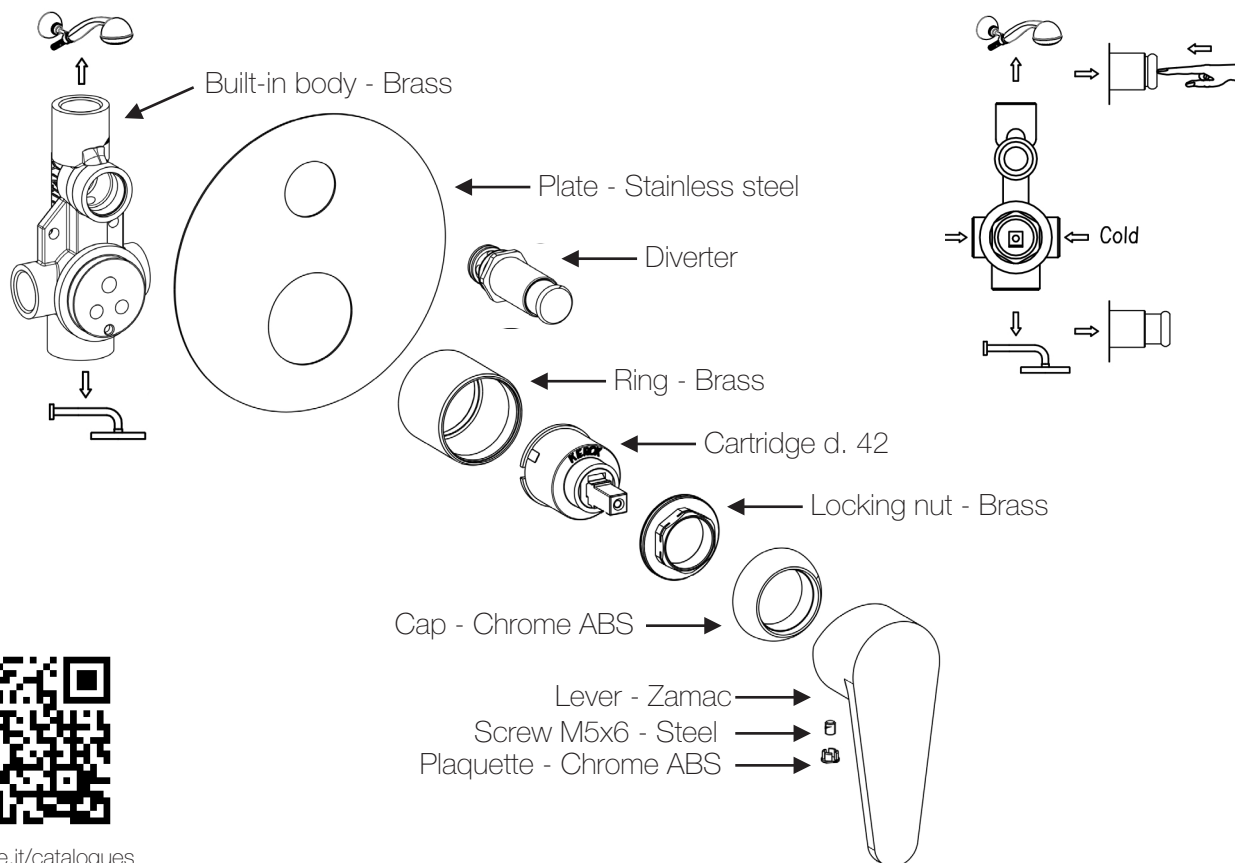
Cartridge diam. 42 mm with 2 ceramic disks, with 25° opening angle, and 90° mixing angle. We use only certified white lubricant into our mixers and cartridges.



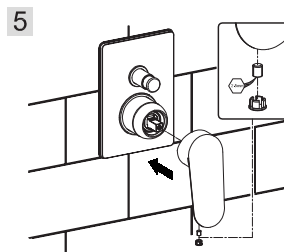
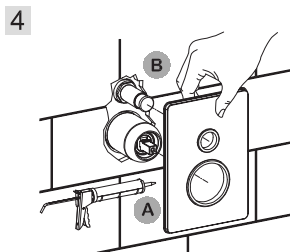
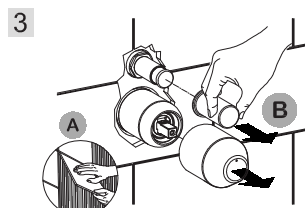
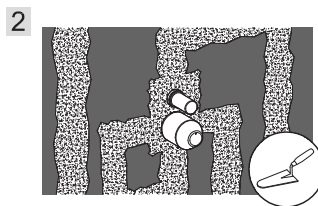
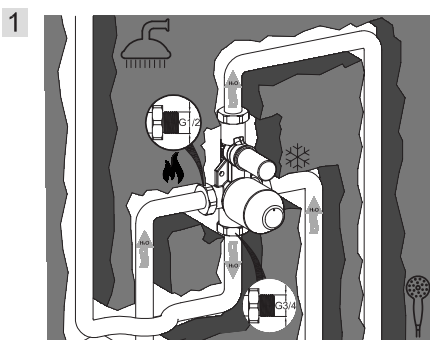
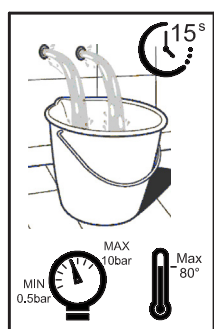
Easy installation with 65 mm brass long fixing screw  
Suitable for electrical water heater



## Technical Data Sheet



[www.fiore.it/catalogues](http://www.fiore.it/catalogues)



### Cleaning recommendation for products and care of finish

**Chrome:** the chrome surfaces can be cleaned with a mild detergent or with neutral soap and water.

**Color finishes:** taps with colored finishes should be cleaned only with a cloth and water.

Never use detergents containing mineral acids (ex. hydrochloric acid), aggressive acids (ex. acetic acid), bases (ex. ammonia) phosphoric acid or other aggressive substances, as they can cause significant damage.